

Dia Lock FT200 User Manual

Components

NO.	Part	Part Description
1	PL07A040188	HÄFELE 237. 59.000 EFL 3 dialock
2	PL07A040143	HÄFELE 237.59. 022_CC200, EFL 3 connection cable 3m
3	PL07A040186	HÄFELE 237.59. 061 ANTENA ISO D=40mm L=3M
4	PL07A040187	HÄFELE 833.02.999, FT Transformer . AC100-240V/DC12
5	PLO7A040144	HÄFELE 237.59. 010 FT200 Multilock adaptor for EFL3
6	PL07A040185	HÄFELE extension 237. 59. 032 (6)
7	PL07A040106	HÄFELE 917.44. 098 Dialock key, Tagit ISO, bule
8	PL07A040078	HÄFELE 917. 44. 681 Cleaning key card
9	PL07A040079	HÄFELE 917.44. 680 Programming card



1



2



3



4



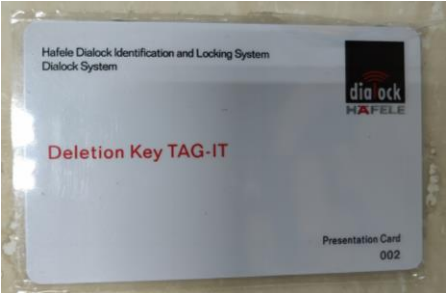
5



6



7



8



9

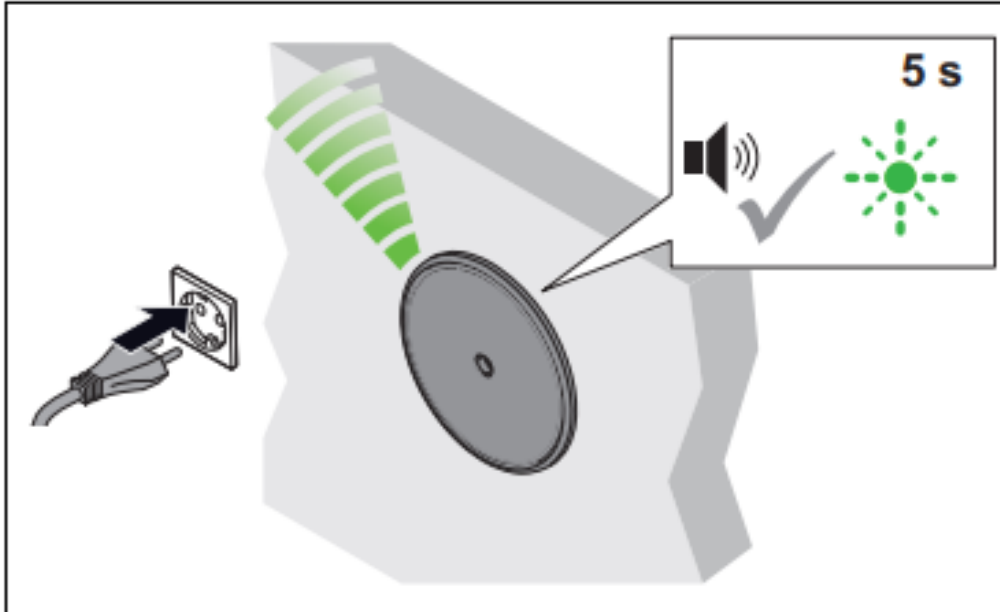
Prerequisites:



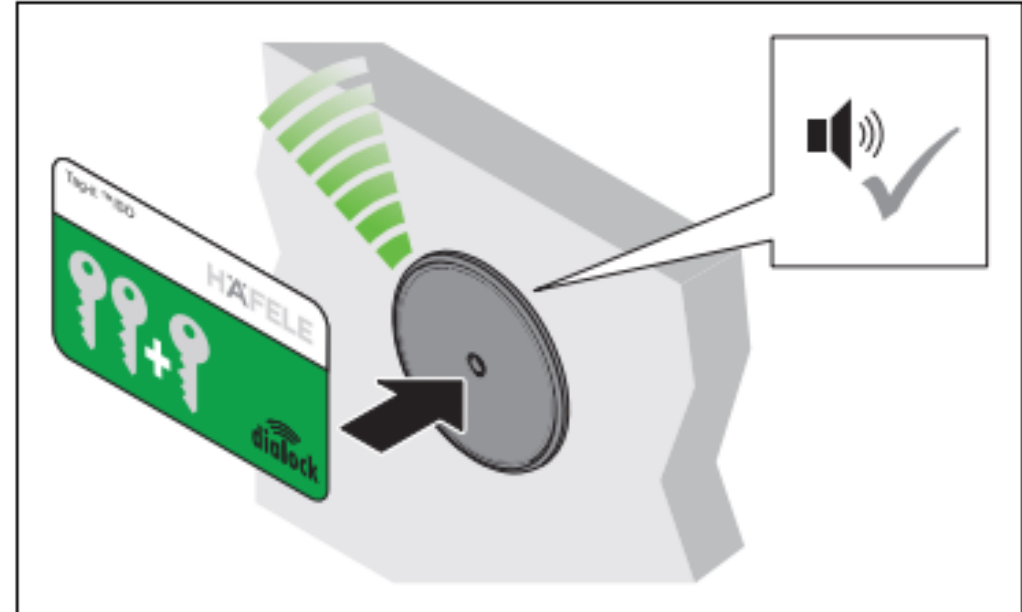
Programming key card



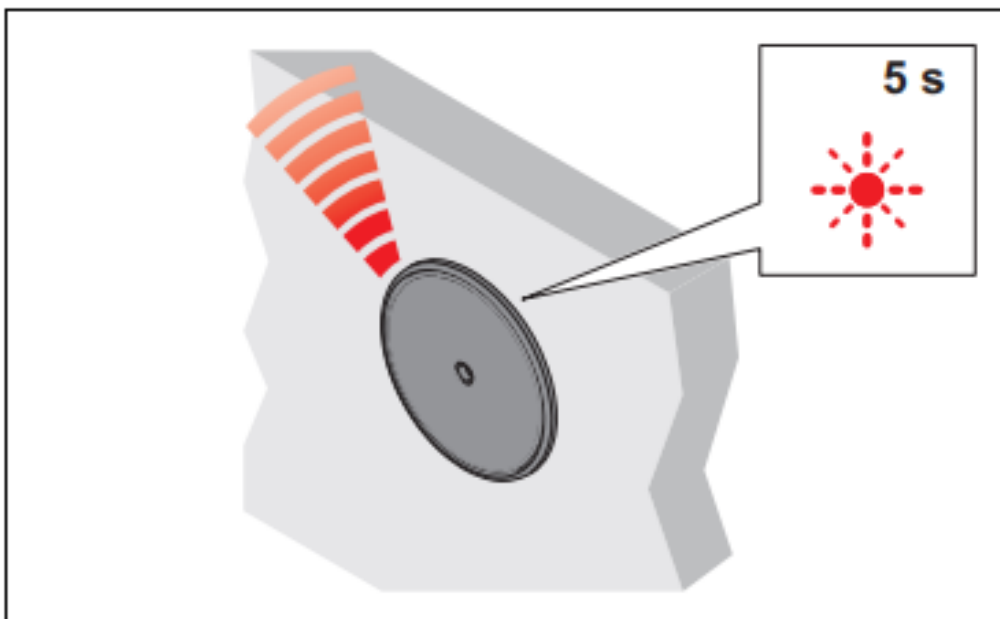
Clearing key card



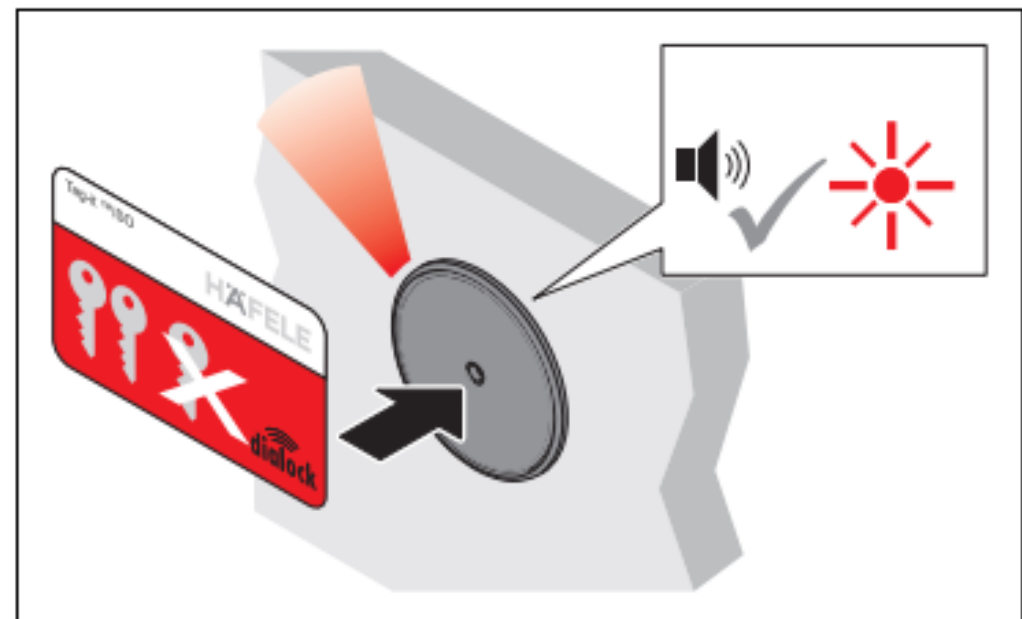
1. Plug in the power plug.
 ▶ Acoustic signal is heard. LED flashes green for max. 5 seconds.



2. Hold the programming key card in front of the antenna during this 5-second period.
 ▶ Acoustic signal is heard.



3. Remove programming key card.
 ▶ LED flashes red for max. 5 seconds.



4. Hold the clearing key card in front of the antenna during this 5-second period.
 ▶ Acoustic signal is heard. LED illuminates red. System is in operation.

6. Programming user keys

6.1 Programming a normal user key

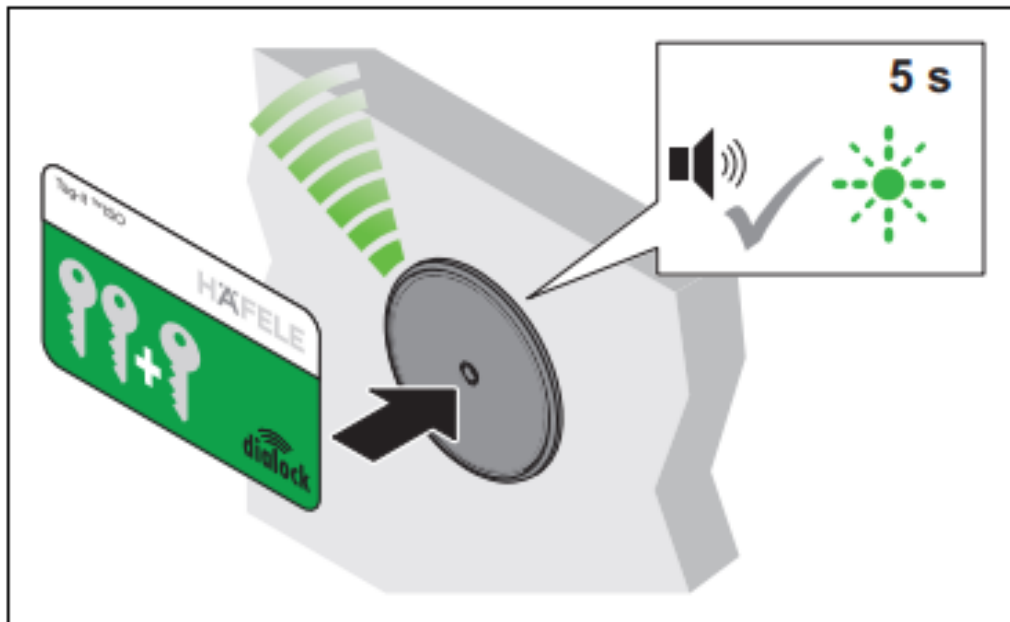
Prerequisites:



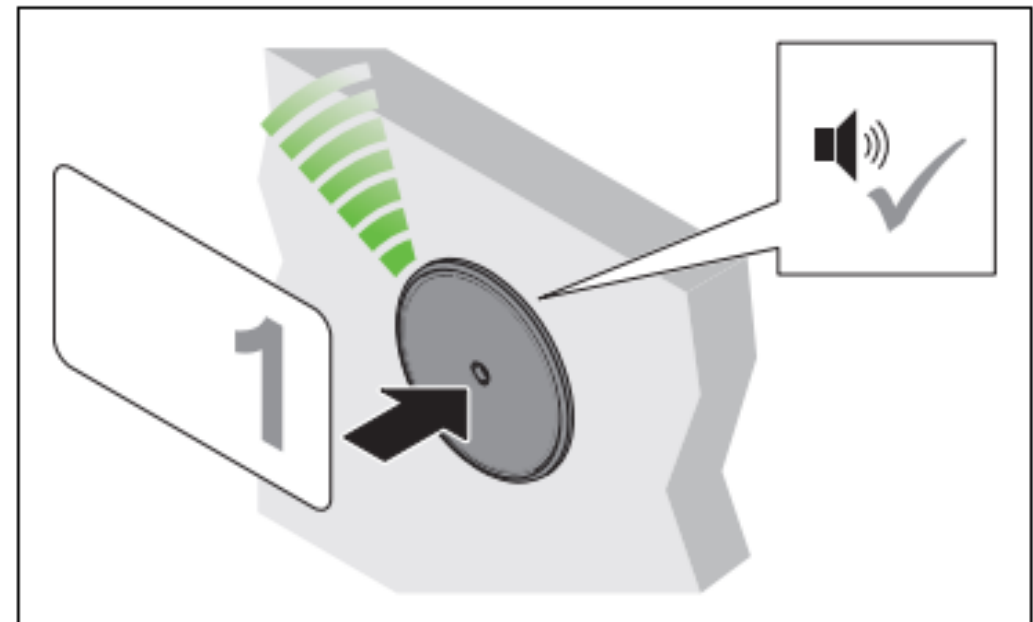
Programming key card



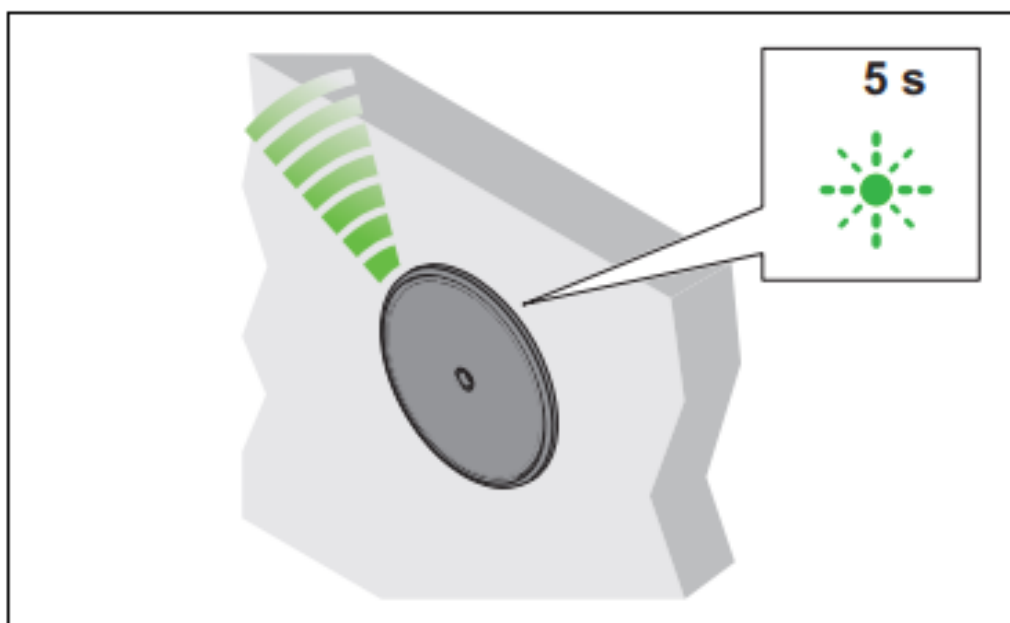
User keys



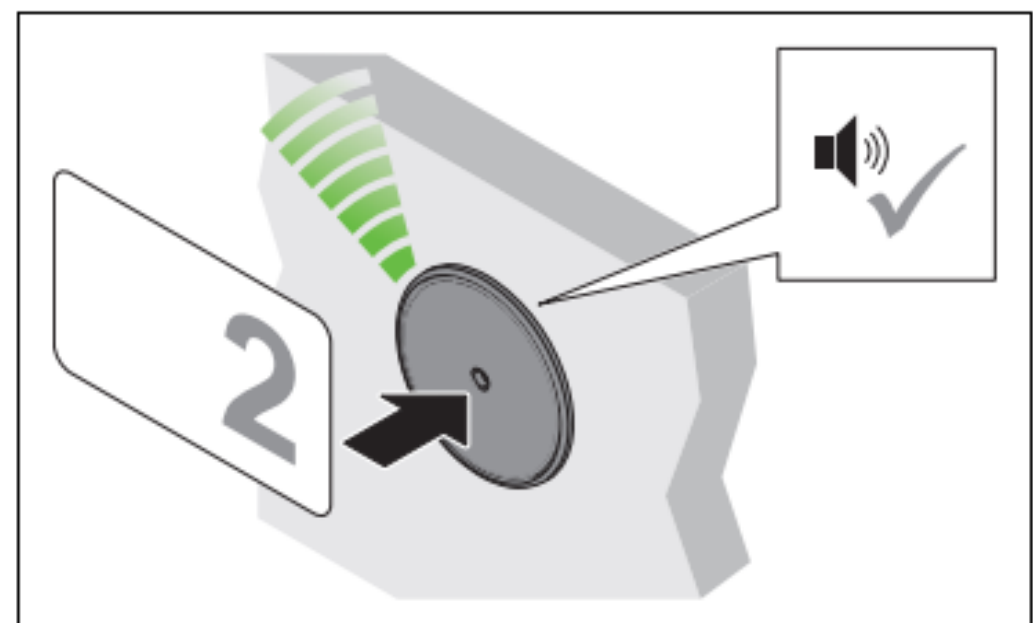
1. Hold the programming key card in front of the antenna.
► Acoustic signal is heard. LED flashes green for max. 5 seconds.



2. Hold the user key in front of the antenna during this 5-second period.
► Acoustic signal is heard. Locking authorisation is allocated.



3. Remove user key.
► LED flashes green for a further 5 seconds.



4. Hold another user key in front of the antenna during this 5-second period.

5. Repeat steps 2 to 4 until all necessary user keys have been granted the locking authorisation.
6. The LED switches to red once the 5 seconds have elapsed.

6.2 Programming a privileged user key

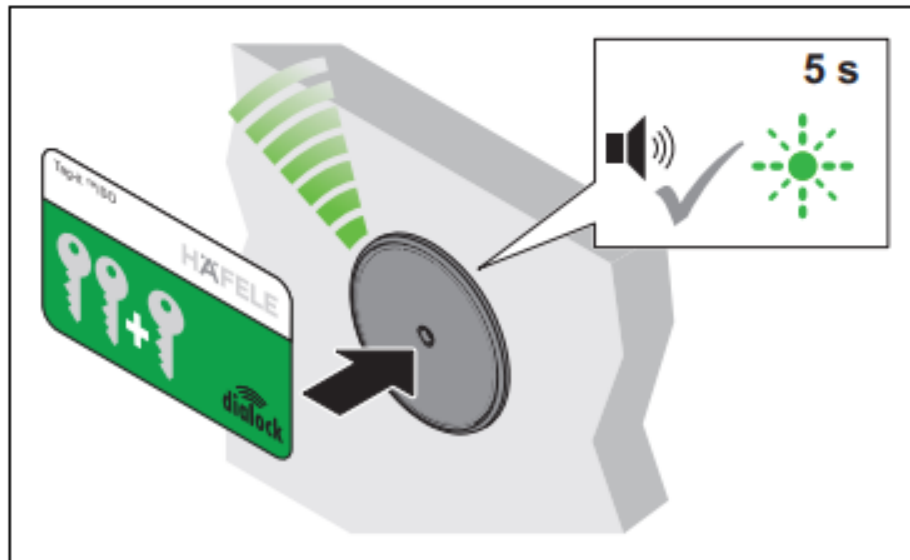
Prerequisites:



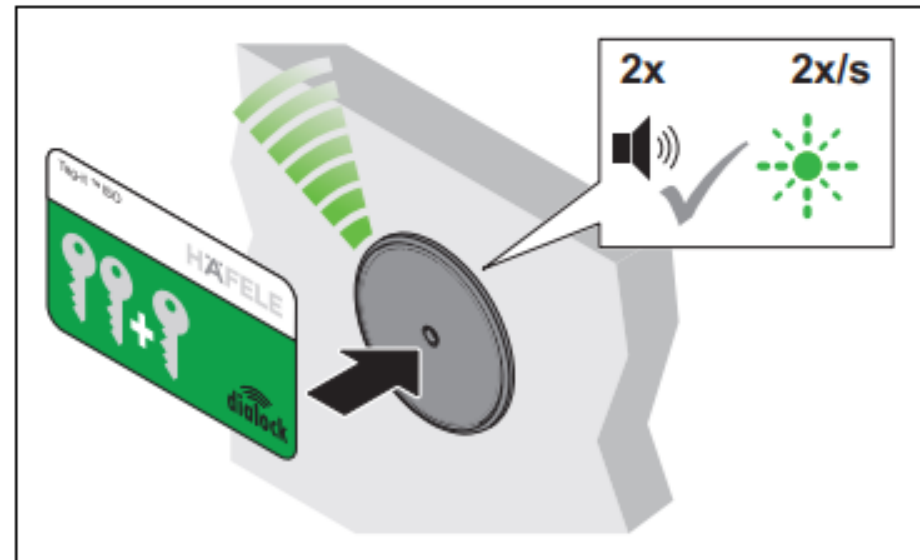
Programming key card



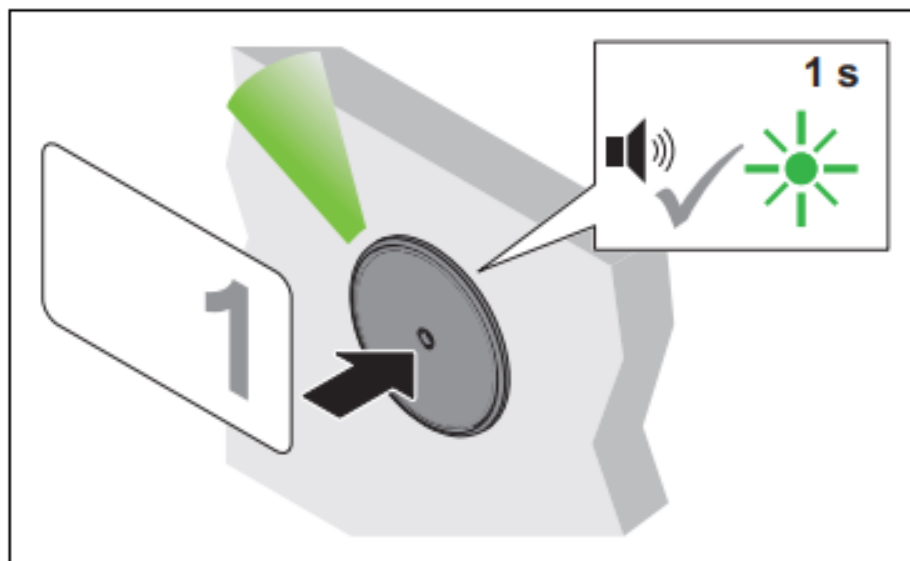
User keys



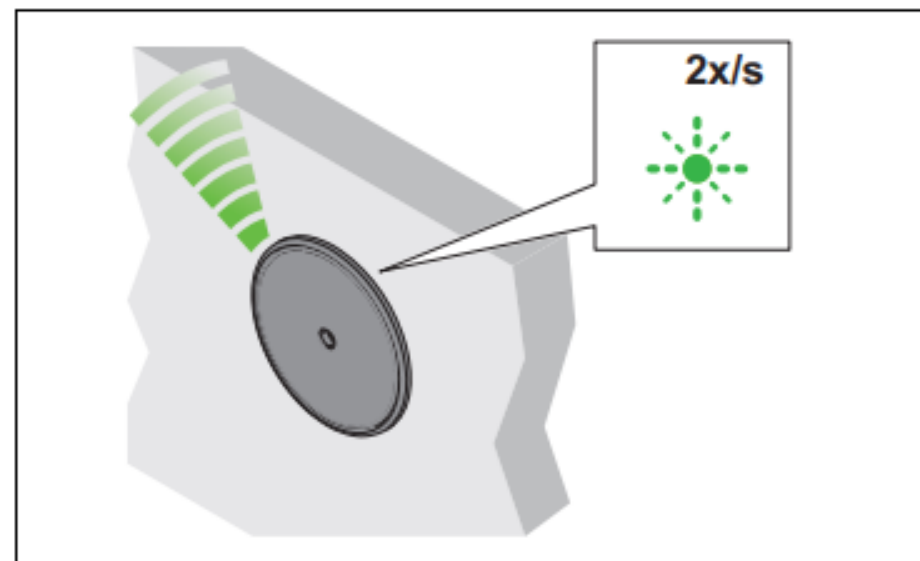
1. Hold the programming key card in front of the antenna.
 ▶ Acoustic signal is heard. LED flashes green for max. 5 seconds.



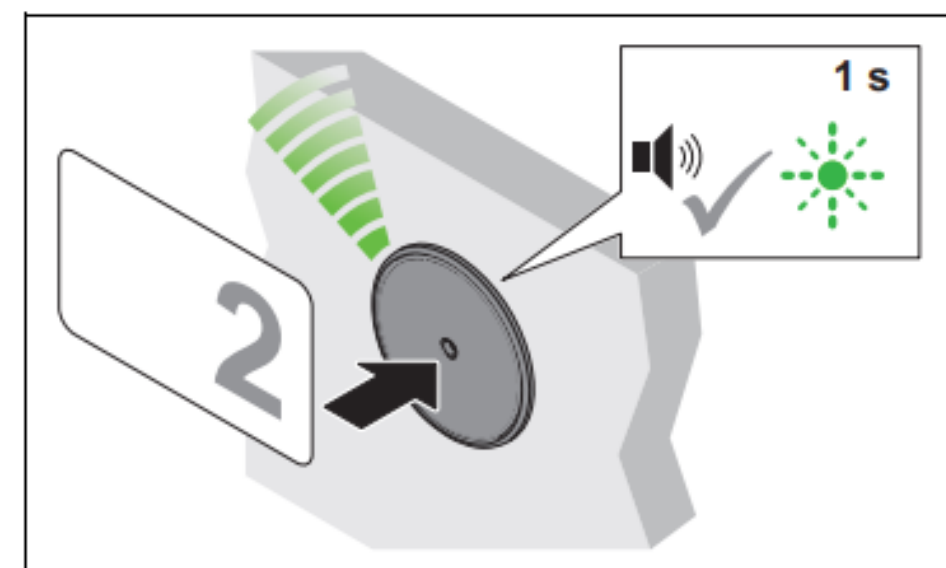
2. Hold the programming key card in front of the antenna again during this 5-second period.
 ▶ Acoustic signal is heard twice. LED flashes green more slowly.



3. Hold the user key in front of the antenna during the 5-second period.
 ▶ Acoustic signal is heard. LED briefly illuminates green. Locking authorisation is allocated.



4. Remove user key.
 ▶ LED continues to flash green slowly.



5. Hold another user key in front of the antenna during the 5-second period.
6. Repeat steps 3 to 5 until all necessary user keys have been granted the locking authorisation.
7. The LED switches to red once the 5 seconds have elapsed.

6.3 Programming a user key with deadbolt lock function

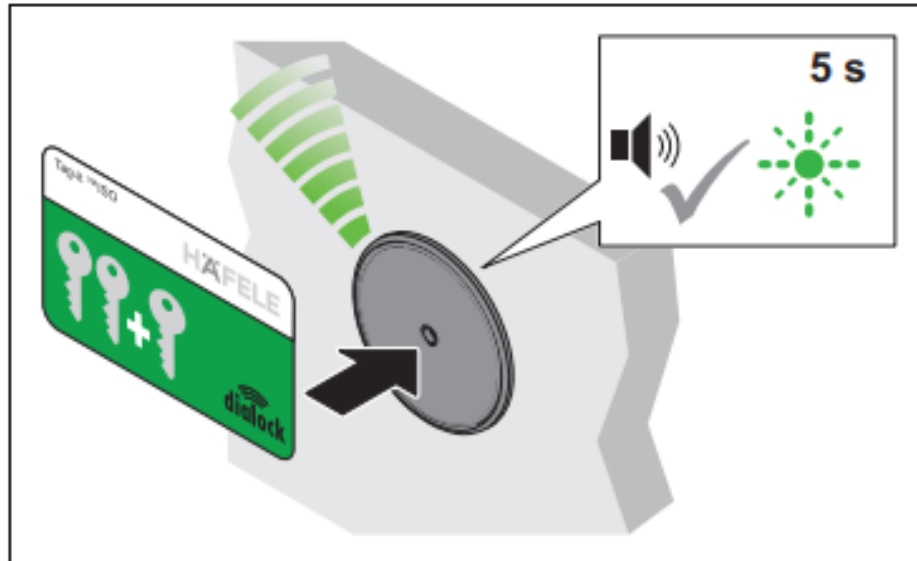
Prerequisites:



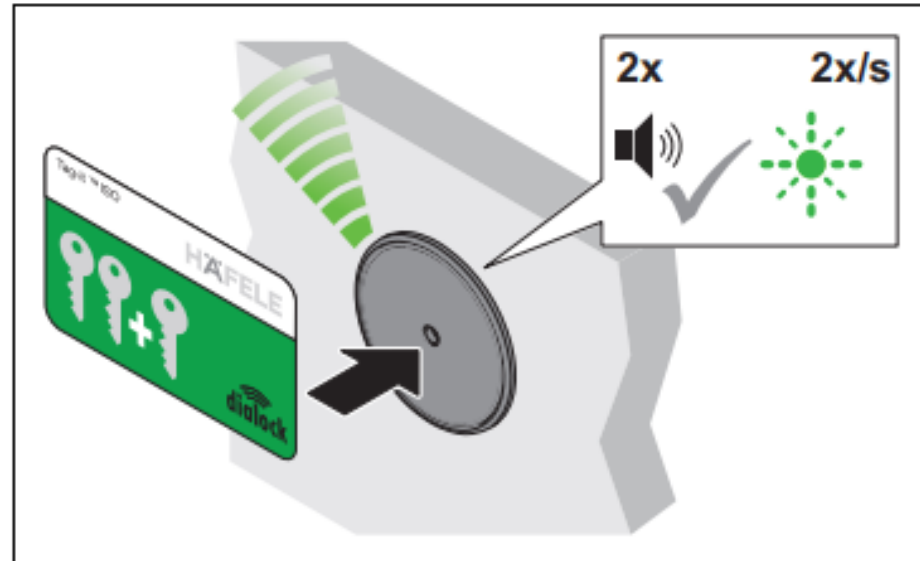
Programming key card



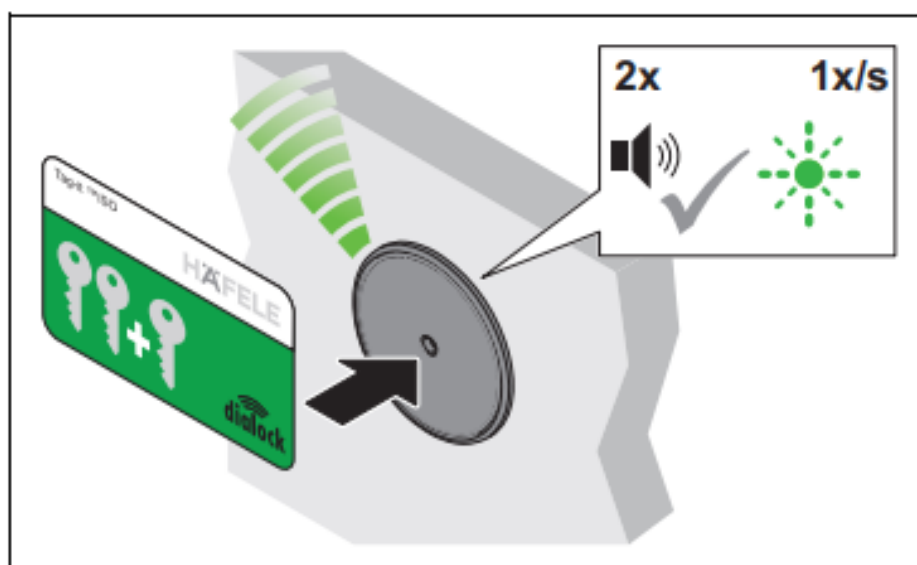
User keys



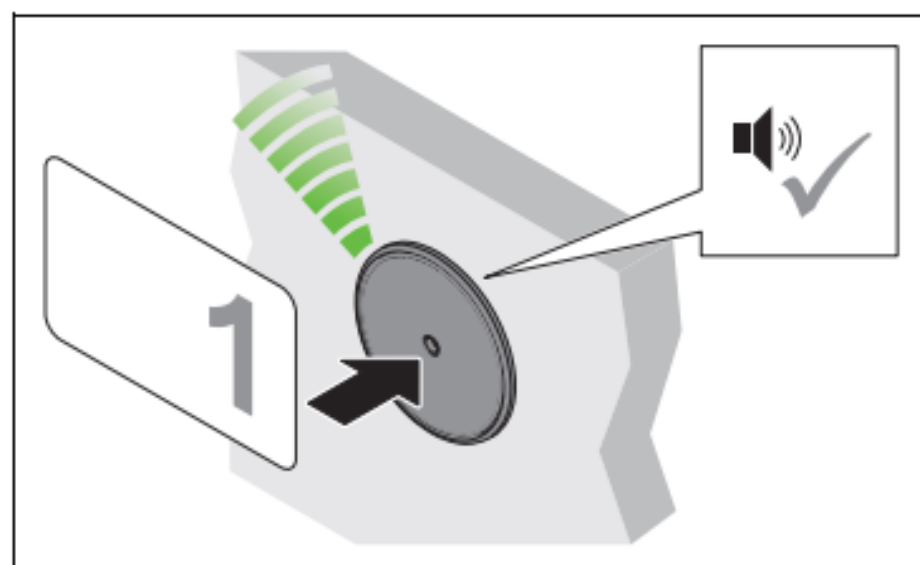
1. Hold the programming key card in front of the antenna.
 ▶ Acoustic signal is heard. LED flashes green for max. 5 seconds.



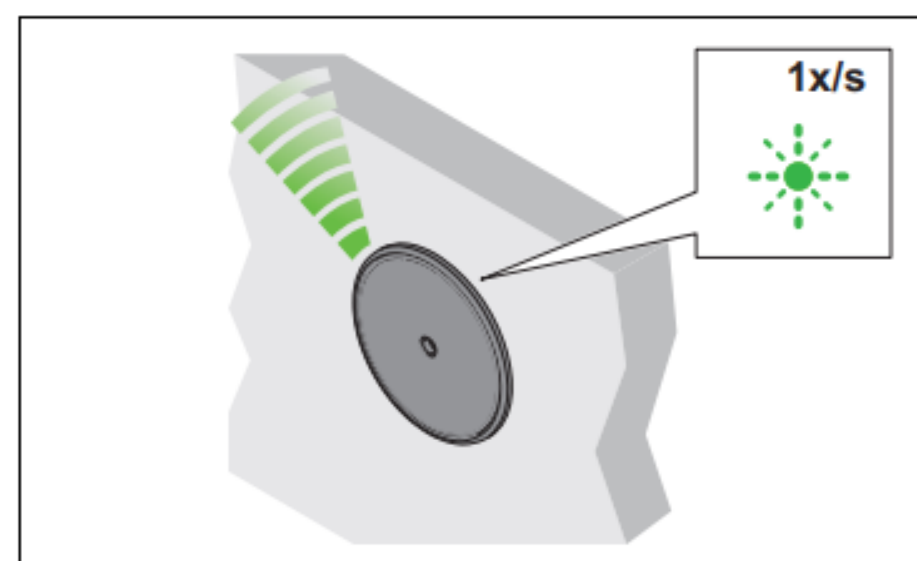
2. Hold the programming key card in front of the antenna again during this 5-second period.
 ▶ Acoustic signal is heard twice. LED flashes green more slowly.



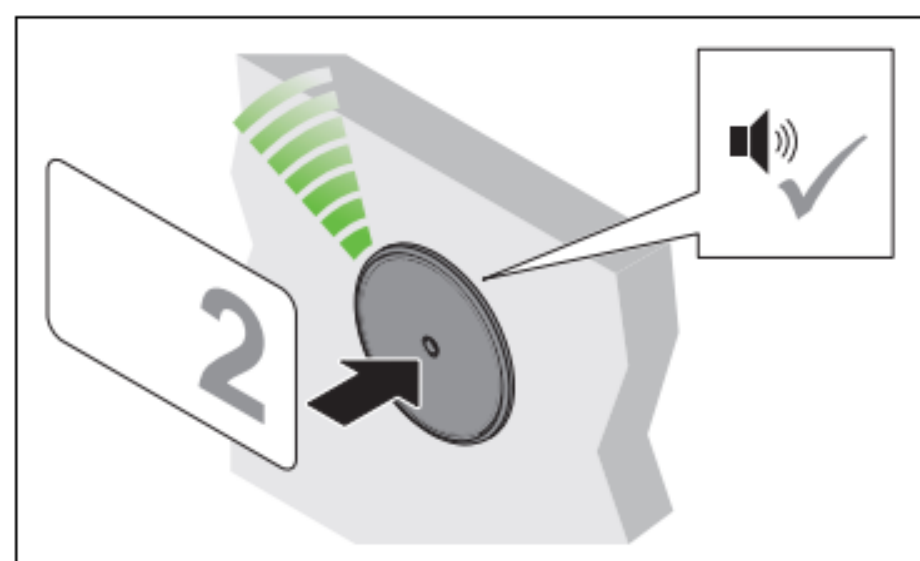
3. Hold the programming key card in front of the antenna again during the 5-second period.
 ▶ Acoustic signal is heard twice. LED flashes green even more slowly.



4. Hold the user key in front of the antenna during the 5-second period.
 ▶ Acoustic signal is heard. Locking authorisation is allocated.



5. Remove user key.
 ▶ LED continues to flash green slowly.



6. Hold another user key in front of the antenna during the 5-second period.

7. Repeat steps 4 to 6 until all necessary user keys have been granted the locking authorisation.
8. The LED switches to red once the 5 seconds have elapsed.

7. Clearing locking authorisations

7.1 Erasing the locking authorisation of an individual user key

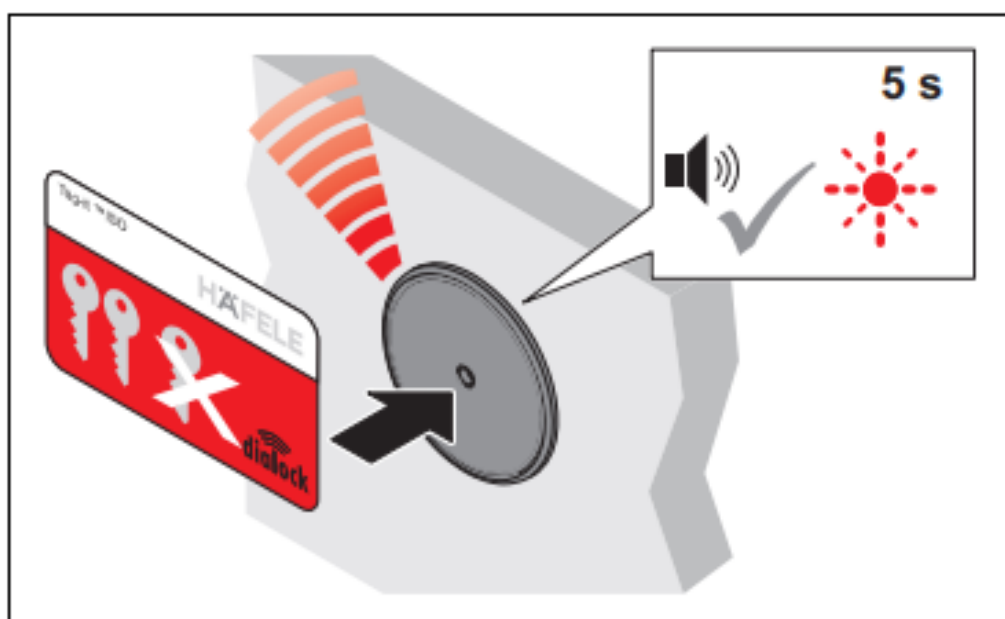
Prerequisites:



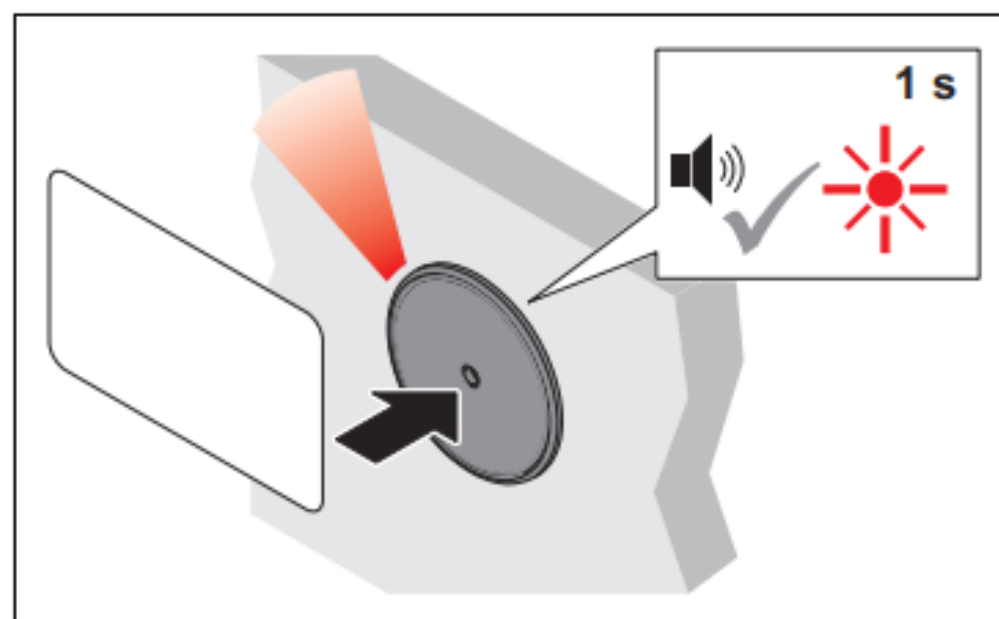
Clearing key card



User key with locking authorisation to be cleared



1. Hold the clearing key card in front of the antenna.
► Acoustic signal is heard. LED flashes red for max. 5 seconds.



2. Hold the user key in front of the antenna during this 5-second period.
► Acoustic signal is heard. LED briefly illuminates red. Locking authorisation of this user key is cleared.

7.2 Clearing locking authorisations for all user keys

If a user key is lost, the locking authorisations of all user keys must be cleared. The locking authorisations can then be granted again ⇒ 6. *Programming user keys*

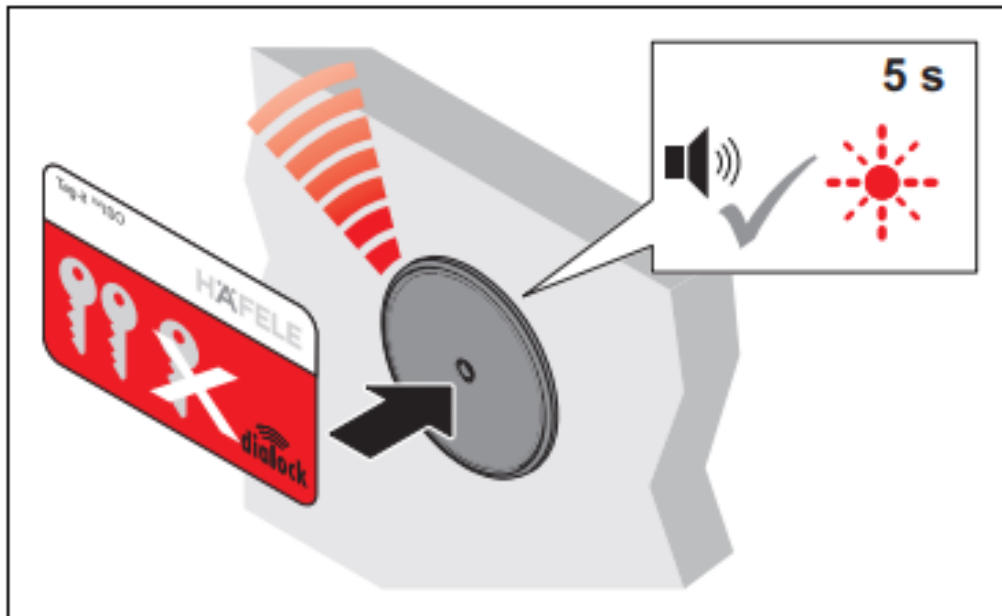
Prerequisites:



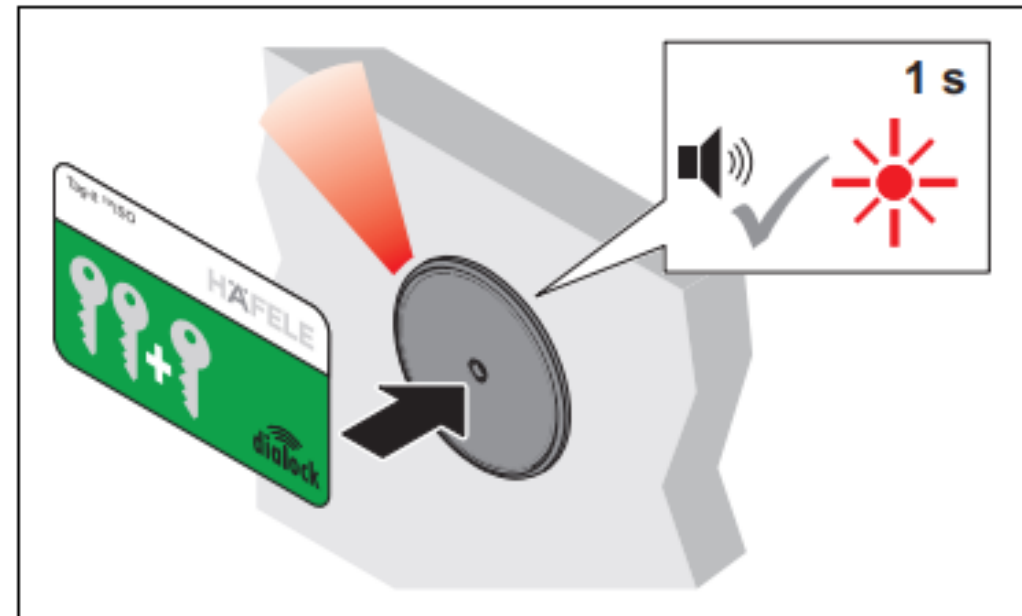
Clearing key card



Programming key card



1. Hold the clearing key card in front of the antenna.
 - Acoustic signal is heard. LED flashes red for max. 5 seconds.



2. Hold the programming key card in front of the antenna during the 5-second period.
 - Acoustic signal is heard. LED briefly illuminates red. The locking authorisations of all user keys are cleared.

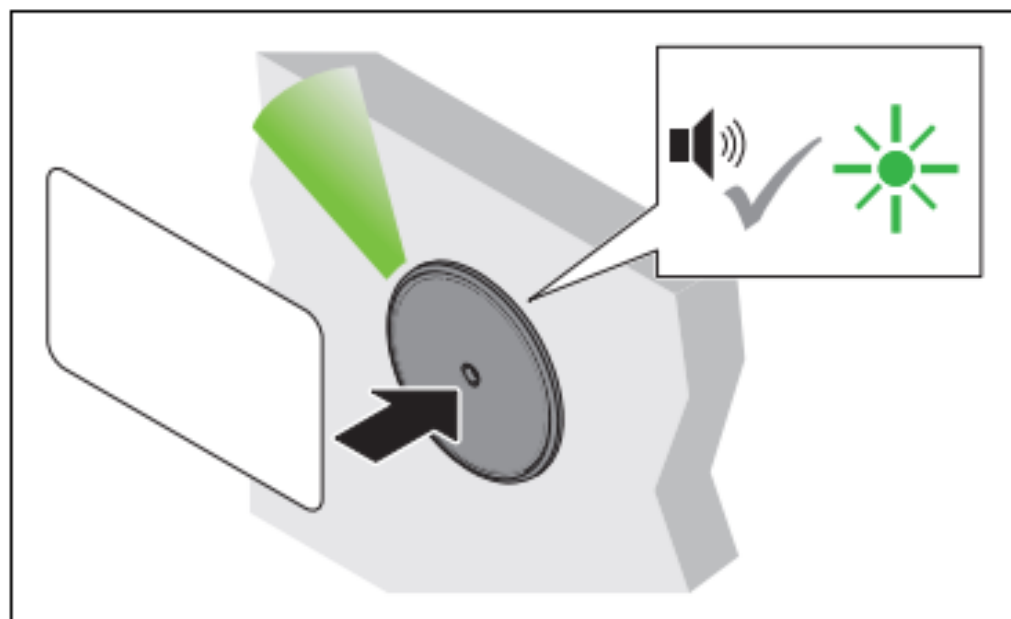
8. Operation

8.1 Operation with a normal user key

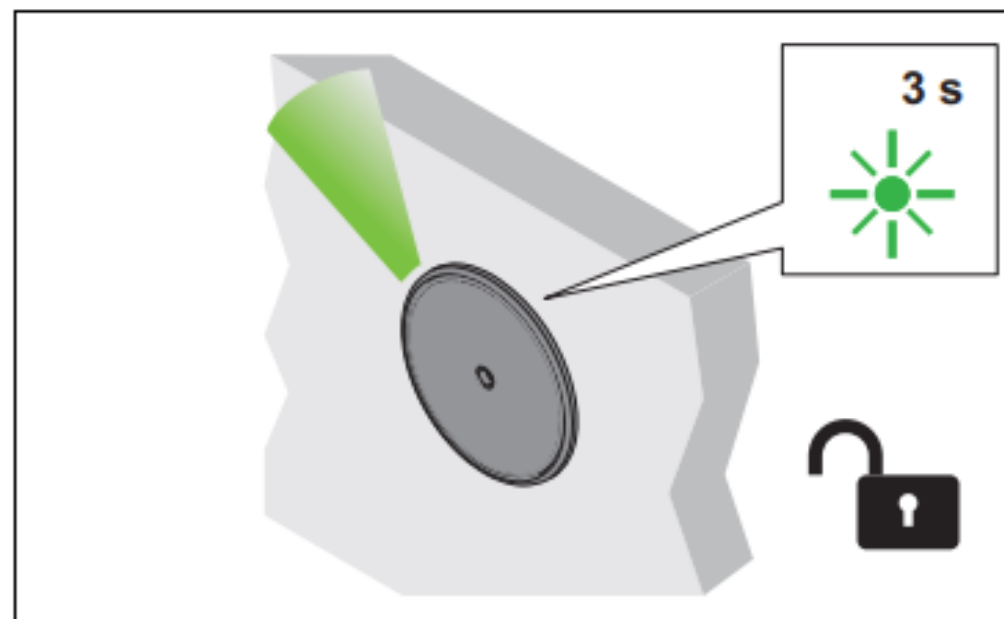
Prerequisites:



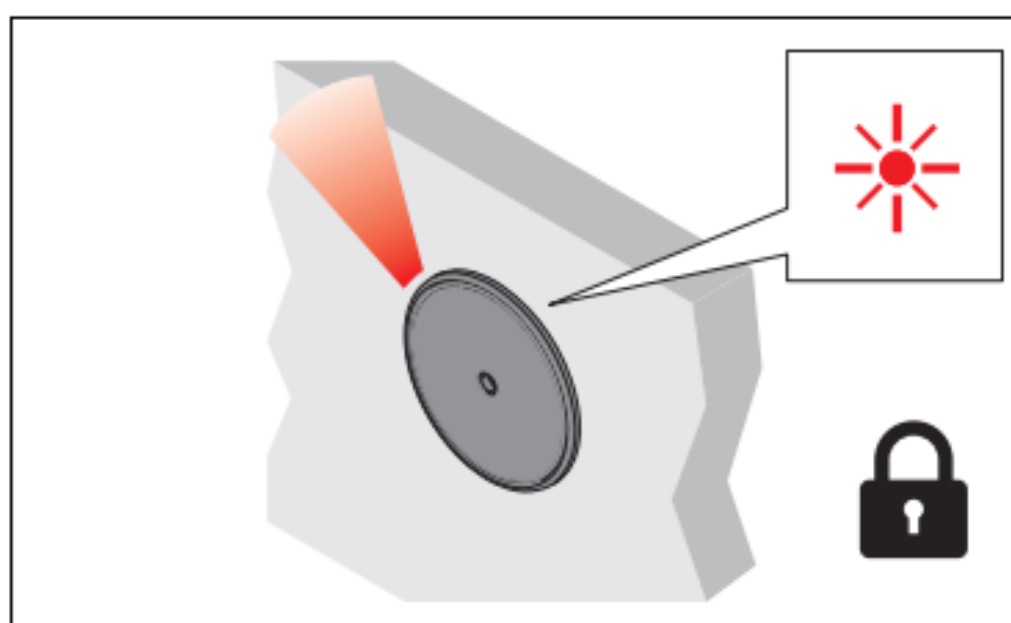
Normal user key with "latchbolt lock operation" locking authorisation (self-locking action)



1. Hold the user key in front of the antenna.
 - Acoustic signal is heard. LED switches to green.



2. Remove user key.
 - LED illuminates green. All locks are open during the open time.



3. The locks lock automatically once the open time has elapsed.
 - LED switches to red.

Each lock has a factory setting of 3 seconds for locking. If the locking time need to be reset, please proceed as follows:

1. To reset the controller (5) please have a small wire and push it into the reset button at the side. You will hear a peep and see a green light flashing on the sensor / antenna (3) (if the sensor / antenna is not covered by stone or other decorative materials). The green flashing turns into a red flashing.
2. Then turn off the electrical power of the controller for a few seconds.
3. Turn on the power again.
4. Hold the green card in front of the dialock sensor / antenna (3).
5. The sensor / antenna starts flashing green and then flashing red.
6. When the sensor / antenna starts flashing red, please hold the red card in front of the sensor / antenna.
7. Please hold again the green card in front of the sensor / antenna.
8. You have now 5 seconds for each user key to be set up. Please hold one user key after the next in front the sensor / antenna.
9. Wait until the light of the sensor / antenna stops flashing.
10. Please test now with the new programmed user keys, to check if the setting was successful.

Videos & Files

Dialock FT200 - How to Reset, Commission and Program User keys

https://youtu.be/9M4T_SSVmoA?si=pLtEig6Nyj346wgZ

Dialock FT 200 - How to set open time

<https://youtu.be/TsE9SAqUXJY?si=TpLp7qWa6WnQyg1W>

Dialock FT 200 - How to clear user keys

https://youtu.be/-9shkToqOkI?si=-fXilstbOowsr_a4



Haefele_Dialock_FT200_Betriebsanleitung.pdf

https://www.hafele.com.de/prod-live/static/WFS/Haefele-HEX-Site/-/Haefele/en_VA/pim/documents/man-doc-04678559.pdf